

# DATAMAN 370 SERIES BARCODE READERS

Superior read performance for the  
broadest range of applications



**COGNEX**

# DATAMAN 370 SERIES BARCODE READERS

Superior read performance for the broadest range of applications

DataMan® 370 series fixed-mount barcode readers solve challenging direct part mark (DPM) and label-based multi-code, multi-symbology applications using Cognex's latest decoding algorithms, a multi-core processor, and new integrated lighting. With twice the performance and power of conventional readers in the same class, DataMan 370 delivers superior read performance for the broadest range of applications, including:

- High-speed lines
- Difficult-to-read parts
- Small codes
- Multi-code, multi-symbology applications
- Multi-sided scan tunnels



## 2X read performance and power

DataMan 370 series barcode readers are optimized with patented decoding algorithms to ensure superior read rate performance for 1D and 2D codes. DataMan 370's multi-core processor enables it to run these algorithms and processes in parallel, resulting in two times the performance and power of comparable high-performance readers.

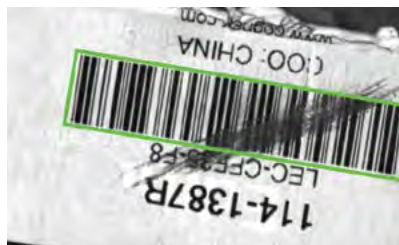


1DMax



Hotbars

**1DMax® with Hotbars®** is an algorithm and technology optimized for omnidirectional 1D barcode reading, decoding up to 10X the speed of a conventional barcode reader.



2DMax



PowerGrid

**2DMax® with PowerGrid®** is a breakthrough algorithm and technology designed to read 2D codes with significant damage to or complete elimination of a code's finder or clocking pattern, or quiet zone.



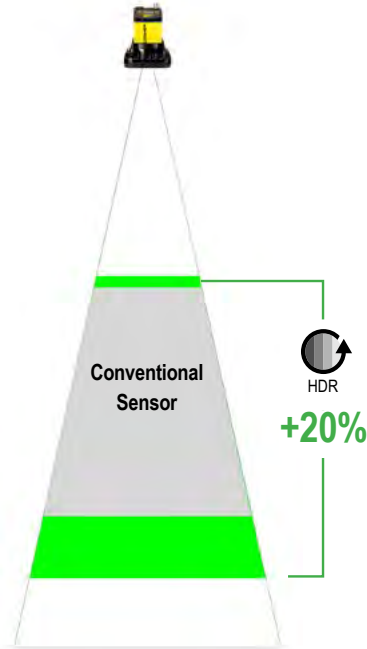


## Best-in-class image formation

DataMan 370's High Dynamic Range (HDR) imaging uses the latest CMOS image sensor technology to acquire single images that are 16X more detailed than conventional sensors. HDR takes advantage of the extra available image data to globally enhance image quality and contrast, resulting in greater depth-of-field, faster line speeds, and improved code handling.

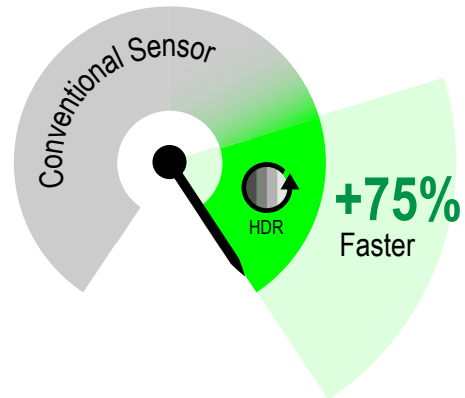
### Greater Depth of Field

HDR reduces over- and under-exposure, providing 20% greater depth of field.



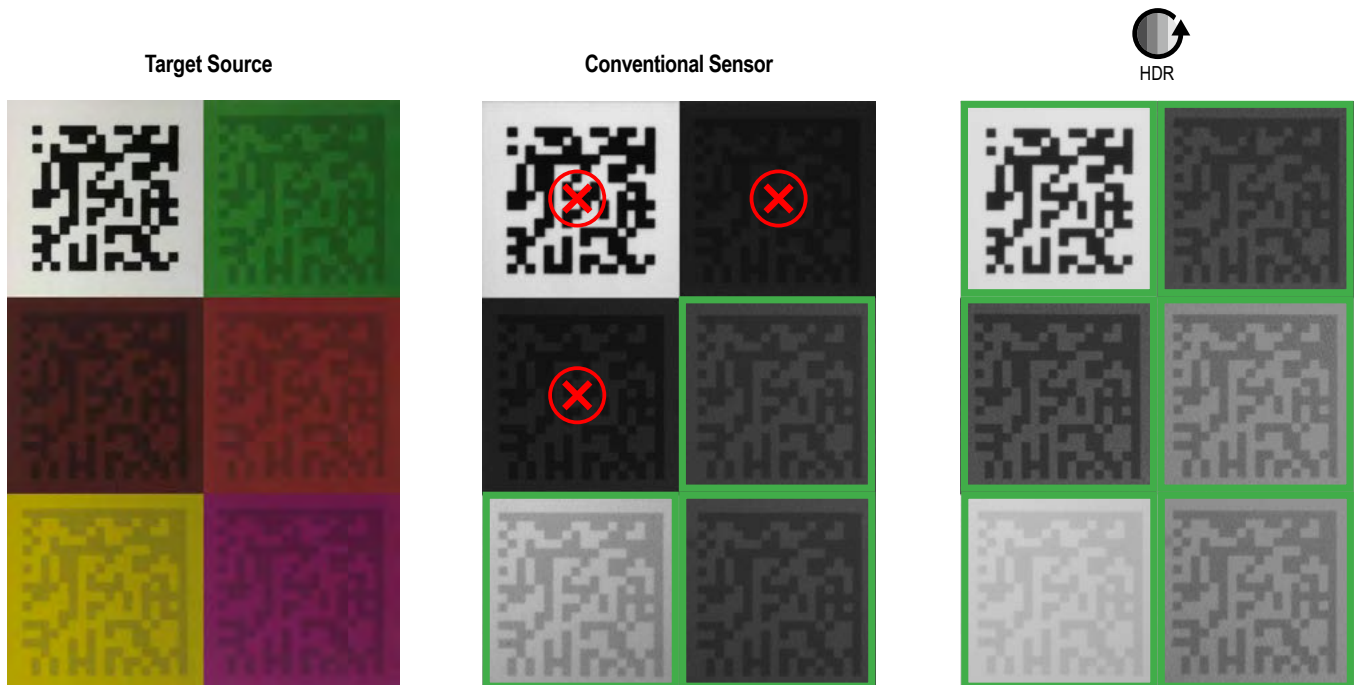
### Faster Line Speeds

HDR reduces exposure times, increasing line speed possibilities by 75%



### Improved Code Handling

HDR allows DataMan 370 to adjust contrast ranges to read difficult codes with variant backgrounds that cannot be read with conventional technology.





## Modularity provides unparalleled flexibility

DataMan 370's innovative design with modular lighting, lens, and communication options provides maximum flexibility and ease-of-use.



RS-232, Ethernet with industrial protocols, SD card, and other network connectivity options



Patented technology and advanced algorithms optimize performance

Same form factor as DataMan 360



High resolution sensors enable greater field-of-view and depth-of-field coverage



Supports encoder inputs for conveyor position tracking



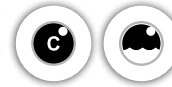
Interchangeable front cover polarization filters fully optimize image quality



Multi-Reader Sync™ capability enables extended coverage



Multi-core processing power for high speed decoding



C-mount and high speed liquid lens with dynamic focusing options maximize application coverage



New high-powered integrated torch (HPIT) provides unmatched illumination power, eliminating the need for external lighting



Guided laser aimer allows field-of-view to be clearly mapped to the desired target.

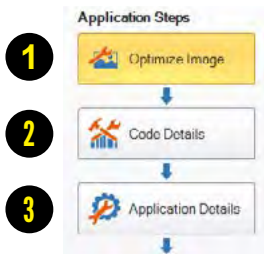


Multi-color LED indicators provide operator feedback



## Easy setup and operation

The DataMan Setup Tool software simplifies installation and operation of DataMan 370. Intelligent auto-tuning and application assistants guide the user to quickly optimize complex parameters with ease.



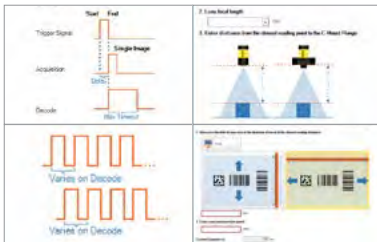
Step-by-step visual guidance



Auto-tune and autofocus



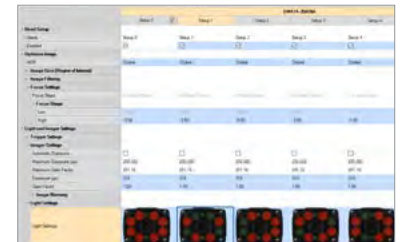
Pre- and post-image optimization tools



Application assistants



Independent lighting controls



Multiple read setups



## Performance feedback helps optimize operations

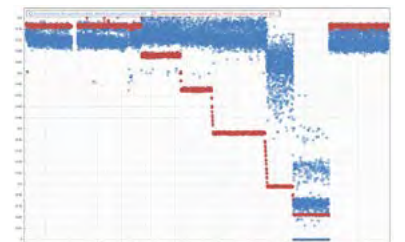
The DataMan Setup Tool software also provides image offload and read result history, process control metrics, and real time monitoring. Process control metrics help identify print quality and readability issues. Real time monitoring provides performance feedback for process optimization, including no-read tracking, code quality metrics, heat mapping, and configuration audit trails.

Result	Result Status
2DIAMONDS	Read
2DIAMONDS	Read
2DIAMONDS	Read
2DIAMONDS	Read
2DIAMONDS	Read
2DIAMONDS	Read
2DIAMONDS	Read
2DIAMONDS	Read
2DIAMONDS	Read
2DIAMONDS	Read

Image & read result history

Property	Value	Grade	Average
Cognex Readability Metrics (Code 39: KINGCLUBS)			
Symbol Grade		F	
Symbol Contrast	+0.443	C	C
Print Growth	-0.195	A	B-
Minimum Reflectance	+0.234	A	A
Edge Contrast Minimu	+0.448	A	A
Single-Scan Integrity 1.		F	B-
Multi-Scan Integrity 1D.	+0.800	A	A

Process control metric feedback



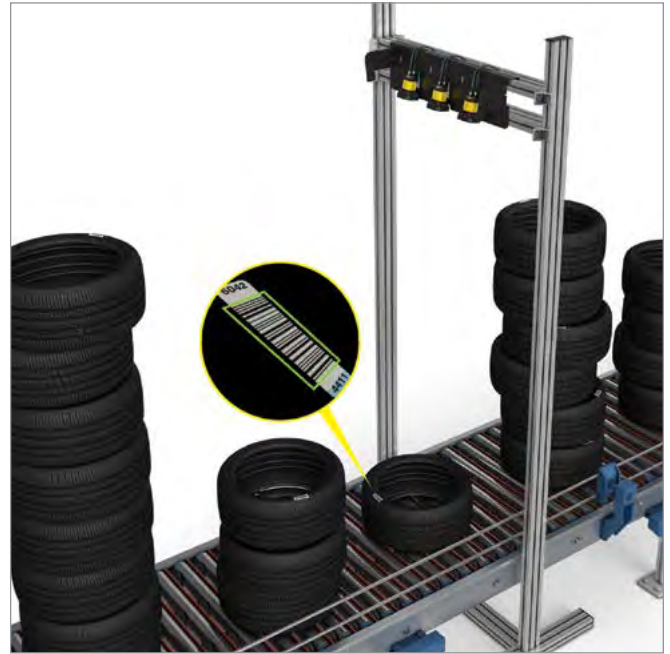
Real time monitoring

## Solves the broadest range of applications

With its superior read performance and best-in-class image formation, DataMan 370 easily solves the broadest range of manufacturing and logistics applications with wide field-of-view and large depth-of-field coverage needs.



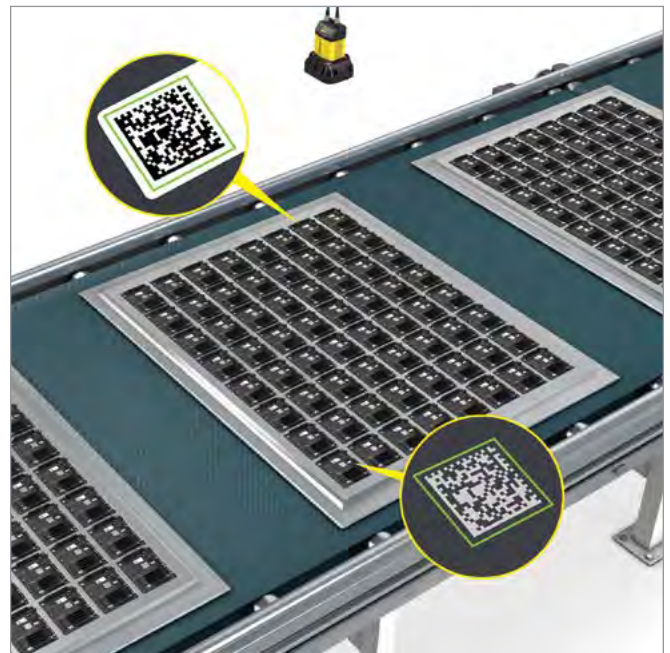
**High-speed code reading**



**Tire identification**



**Difficult-to-read automotive parts**



**Electronic component traceability**

DataMan 370 series barcode readers deliver unmatched overhead or desktop presentation scanning performance due to 1D/2D auto-discrimination, a guided laser aimer, and dynamic focusing technology.



**Multi-code, multi-symbology presentation scanning**

Single-, multi-, and full coverage scan tunnel options are available to help increase throughput in logistics applications. Multi-Reader Sync technology synchronizes several readers for increased field of view and multi-side scanning at high speeds.



**Single-sided scan tunnel**



**Multi-sided scan tunnel**



**Full coverage scan tunnel**

# DATAMAN 370 SERIES SPECIFICATIONS

	DataMan 374	DataMan 375
Algorithms	1DMax, 2DMax, Hotbars, PowerGrid	
Image Sensor	1/1.8" CMOS	2/3" CMOS
Image Sensor Properties	Diagonal 8.9 mm; 3.45 $\mu$ m square pixels	Diagonal 11.1 mm; 3.45 $\mu$ m square pixels
Image Sensor Resolution	2048 x 1536	2448 x 2048
Electronic Shutter Speed	Min. exposure: 15 $\mu$ s Max. exposure: 1000 $\mu$ s with internal illumination/10000 $\mu$ s with external illumination	
Max Acquisition	Up to 80 Hz	Up to 55 Hz
Lens Options	Liquid lens 10 mm, 16 mm, 24 mm; C-mount 12 mm, 16 mm, 25 mm, 35 mm, 40 mm	
Trigger and Tune Buttons	Yes; Quick Setup Intelligent Tuning	
Aimer	Optional	
Discrete Inputs	2 fixed + (*) opto-isolated	
Discrete Outputs	2 fixed + (*) opto-isolated	
*Other I/O Points	2 user-configurable	
Status Outputs	Beeper, 5 multifunctional LEDs, 10 LED bar array, 360-degree indicator	
Lighting	Integrated LEDs, red, blue or IR; diffuse, polarized, high powered integrated light (HPIL), high powered integrated torch (HPIT), various controllable external light options	Integrated LEDs, red, blue or IR; diffuse, polarized, high powered integrated torch (HPIT), various controllable external light options
Communications	Ethernet and serial	
Protocols	RS-232, TCP/IP, PROFINET, EtherNet/IP™, SLMP, Modbus TCP, NTP, SFTP, FTP, MRS, Java Scripting enabled for custom protocols	
Power Consumption	24 VDC $\pm$ 10%, 1.5 A maximum (HPIL/HPIT <sup>1</sup> ) 24 VDC, 250 mA maximum (reader) Supplied by LPS or NEC class 2 only	
Weight	165 g	
Dimensions	73 mm x 54 mm x 42 mm; 113 mm x 91 mm x 75mm (with HPIT)	
Operating Temperature	0 °C–57 °C (32 °F–134.6 °F) <sup>2</sup>	
Storage Temperature	-20 °C–80 °C (-4 °F–176 °F)	
Operating and Storage Humidity	< 95% non-condensing	
Protection	IP67 with cables and appropriate lens cover attached	
RoHS Certified	Yes	
Approvals (CE, UL, FCC)	Yes	

<sup>1</sup> HPIL denotes one of the DM360-HPIL-RE, DM360-HPIL-RE-P, DMLT-HPIL-RE or DMLT-HPIL-RE-P accessories. HPIT denotes one of the DMLT-HPIT-RE-W, DMLT-HPIT-RE-S, DMLT-HPIT-RE-N, DMLT-HPIT-WHI-W, DMLT-HPIT-WHI-S, DMLT-HPIT-WHI-N accessories.

<sup>2</sup> In situations where the operating temperature exceeds 40 °C, an external heat sink is required.

## COGNEX

Companies around the world rely on Cognex vision and barcode reading solutions to optimize quality, drive down costs and control traceability.

Corporate Headquarters One Vision Drive Natick, MA 01760 USA

### Regional Sales Offices

#### Americas

North America +1 844-999-2469  
Brazil +55 (11) 2626 7301  
Mexico +01 800 733 4116

#### Europe

Austria +49 721 958 8052  
Belgium +32 289 370 75  
France +33 1 7654 9318  
Germany +49 721 958 8052

Hungary +36 800 80291  
Ireland +44 121 29 65 163  
Italy +39 02 3057 8196  
Netherlands +31 207 941 398  
Poland +48 717 121 086  
Spain +34 93 299 28 14  
Sweden +46 21 14 55 88  
Switzerland +41 445 788 877  
Turkey +90 216 900 1696  
United Kingdom +44 121 29 65 163

#### Asia

China +86 21 6208 1133  
India +9120 4014 7840  
Japan +81 3 5977 5400  
Korea +82 2 530 9047  
Malaysia +6019 916 5532  
Singapore +65 632 55 700  
Taiwan +886 3 578 0060  
Thailand +66 88 7978924  
Vietnam +84 2444 583358

© Copyright 2019, Cognex Corporation.  
All information in this document is subject to change without notice. All Rights Reserved. Cognex, DataMan, 1DMax, Hotbars, 2DMax, and PowerGrid are registered trademarks of Cognex Corporation. Multi-Reader Sync is a trademark of Cognex Corporation. All other trademarks are property of their respective owners. Lit. No. DSDM370-10-2019

[www.cognex.com](http://www.cognex.com)